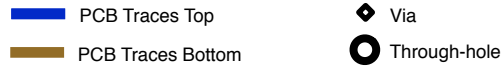
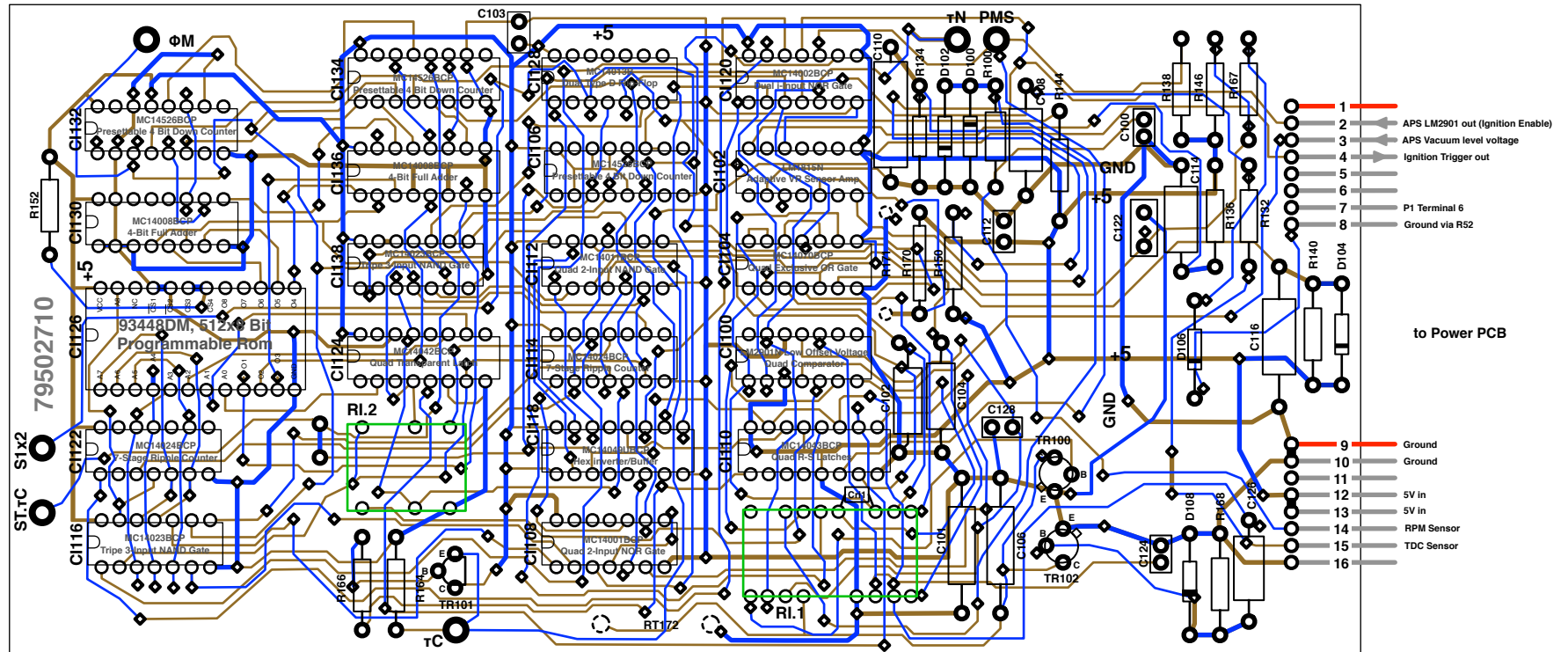


Marelli SAE 701 A Logic PCB
 Component and Circuit Diagram
 2/2013, 1.1, dinoplex.org



Diagnose Terminals

- ST.tC** Start of Coil Dwell Phase tC
- S1x2** V (Ref) Sensor Pulse x2
- ΦM** Preset Enable, load data into Counter. High=Positive Phase of H (TDC) Sensor
- tC** Coil Dwell Phase (identical to StTcA on Power Board, controls TO-3 base)
- tN** Clock for Address Counter
- PMS** Pulse, H (TDC) Sensor crossing Zero



Components

C1100 LM2901N	C1130 MC14008BCP	C100 0.1nF	R100 1K 5%	RI.1 APS LDVR DC & Mixed Signal Processing
C1102 LM1815N	C1132 MC14526BCP	C101 10 uF 1500+-20%	R130 100K 5%	RI.2 Clock/APS DC Ramp Processing
C1104 MC14070BCP	C1134 MC14526BCP	C102 1.55 330 + 5%	R132 18K 5%	
C1106 MC14526BCP	C1136 MC14008BCP	C103 .01K 100uF	R136 33K 5%	
C1108 MC14001BCP	C1138 MC14023BCP	C104 680/10 400V	R138 5.6K 2%	
C1110 MC14043BCP		C106 0.1/2 100V	R140 100K 5%	
C1112 MC14011BCP	TR100 BC108C (NPN)	C108 2200/10 630-	R144 10K 5%	
C1114 MC14024BCP	TR101 BC327K (NPN)	C110 .33/5 63V-	R146 100K 5%	
C1116 MC14023BCP	TR102 BC108C (NPN)	C112 100nF	R150 100K 5%	
C1118 MC14049UBCP		C114 470 / 5%	R152 1K 5%	
C1120 MC14002BCP	D100 1N4448	C116 0.1/2 100V	R164 10K 5%	
C1122 MC14024BCP	D102 1N4448	C122 104K 200V-	R166 12K 5%	
C1124 MC14042BCP	D104 1N4448	C124 47uF	R167 10K 5%	
C1126 93448DM	D106 1N4448	C126 2200/10	R168 4.7K 10%	
C1128 MC14013B	D108 1N4448	C128 47uF	R170 Shunt	
		Cri1 47pF (Back of PCB)		